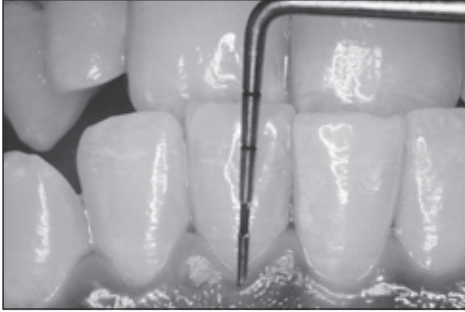


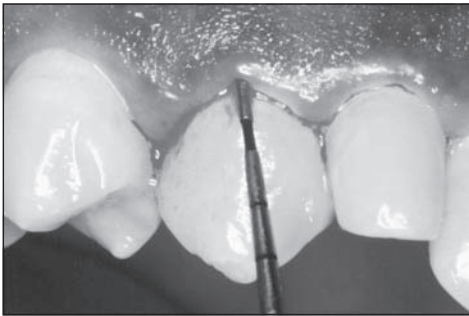
## Periodontal Screening and Recording (PSR) System

### Criteria for Assigning PSR Codes



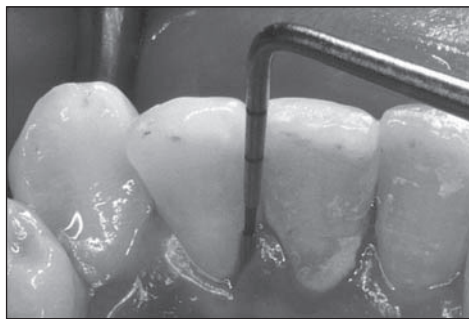
#### Code 0

- Color-coded reference mark is completely visible in the deepest sulcus or pocket of the sextant.
- No calculus or defective margins on restorations are present.
- Gingival tissues are healthy with no bleeding evident on gentle probing.



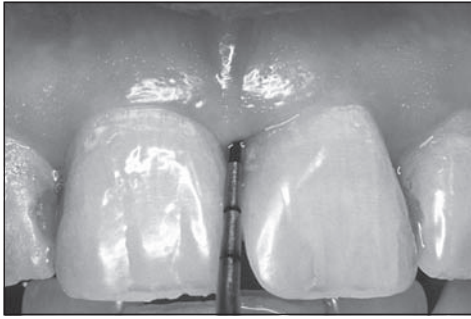
#### Code 1

- Color-coded reference mark is completely visible in the deepest sulcus or pocket of the sextant.
- No calculus or defective margins on restorations are present.
- Bleeding IS present on probing.



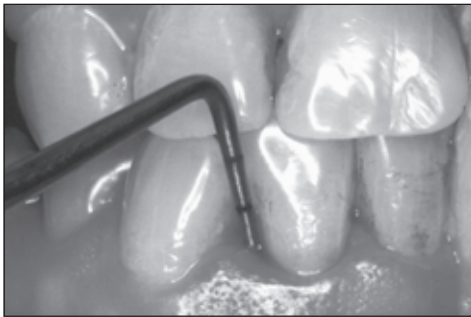
#### Code 2

- Color-coded reference mark is completely visible in the deepest sulcus or pocket of the sextant.
- Supragingival or subgingival calculus and/or defective margins are detected.



**Code 3**

- Color-coded reference mark is partially visible in the deepest sulcus or pocket of the sextant.
- This code indicates a probing depth between 3.5 and 5.5 mm.



**Code 4**

- Color-coded reference mark is not visible in the deepest sulcus or pocket in the sextant.
- This code indicates a probing depth of greater than 5.5 mm.



**Code \***

The \* symbol is added to the code of a sextant exhibiting any of the following abnormalities:

- furcation involvement
- mobility
- mucogingival problems
- recession extending into the colored area of the probe

Pictured here is an example of a sextant that has teeth with furcation involvement. Therefore, the symbol should be recorded next to the sextant code.

Implications of PSR Codes	
Code	Further Clinical Documentation
Code 0, 1, or 2 in all sextants	No further documentation needed
Code 3 in one sextant	Comprehensive periodontal assessment of sextant with 3 code
Code 3 in two or more sextants	Comprehensive periodontal assessment of entire mouth
Code 4 in one or more sextants	Comprehensive periodontal assessment of entire mouth

## Documenting PSR Codes

For a PSR completed on May 14, 2004, the PSR box chart would look like the chart shown below.

3			2			1			Periodontal Screening and Recording											
3			3			4*			0		5		1		4		0		4	
Sextant Score			Sextant Score			Sextant Score			Month		Day		Year							

On this sample PSR chart, the following codes have been entered:

- Maxillary right posteriors = Code 3
- Maxillary anterior sextant = Code 2
- Maxillary left posteriors = Code 1
- Mandibular right posteriors = Code 3
- Mandibular anterior sextant = Code 3
- Mandibular left posteriors = Code 4 plus the \* symbol to indicate one of the following problems: furcation involvement, mobility, mucogingival problems, or recession extending into the colored area of the probe.